



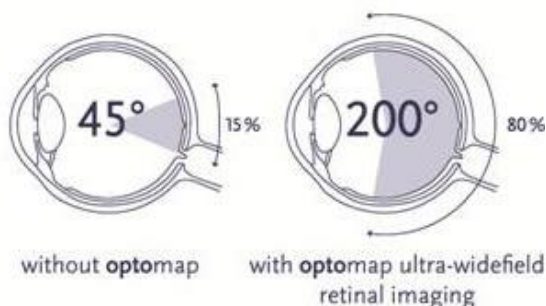
Bridget A. Milliken, OD · 202 Advocate Row · Vidalia, LA 71373
 Ph: (601) 443-9876 · Fax: (601) 442-4000

Dr. Milliken recommends the Optomap be done annually as part of a routine health exam for patients of all ages.

Miss-Lou Eye Care is concerned with the overall health of your eyes not just glasses or contacts. The Optomap is used to help find and detect:

- Diabetes and diabetic retinopathy
- Glaucoma
- High blood pressure
- Retinal detachments
- Macular degeneration
- Eye cancer and many other eye conditions

As easy as taking a photo, the Optomap Retinal System captures a digital image and permanently stores it in the computerized database for analysis and future comparison. Just as your dentist regularly takes pictures of your teeth, or mammograms are used for early detection, your eyes deserve the same quality of care.



A conventional undilated eye exam only allows the doctor to see up to 45 degrees of the retina.

The Optomap gives up to a 200 degree view of the retina.

Although insurance companies do not pay for this screening service, Miss-Lou Eye Care has made it affordable for a fee of \$30.

Please check the appropriate box:

_____ **YES**, I do want to have the Optomap digital imaging done and discuss the results with Dr. Milliken. I am aware I will pay a fee of \$30 along with any additional fees or co-pays that accompany the comprehensive examination.

_____ **NO**, I do not want this medical test.

Patient/Guardian Signature _____ Date _____